

**THE BETSY HOTEL ANNOUNCES EXHIBITIONS TO COINCIDE WITH ART BASEL MIAMI BEACH 2017**  
**OCEAN DRIVE AWARD-WINNING LUXURY HOTEL CHAMPIONS MIAMI ARTISTS AND GLOBAL VOICES**

**FOR IMMEDIATE RELEASE (Miami Beach, November 17, 2017)** The Betsy-South Beach (thebetsyhotel.com), an Official Art Basel in Miami Beach Hotel Partner, and Travel and Leisure's 2017 Top Boutique Miami Beach Resort Hotel announces exhibitions during the week of Art Basel in Miami Beach to include the work of nine Miami artists, NY-based artist Gerard Mossé, and Prizm Art Fair exhibitors, reflecting diverse and powerful creative voices. The Betsy will also showcase two new permanent public art installations and an outdoor sculpture exhibited in partnership with Royal Enfield Motorcycles. A public property-wide opening is December 8 at 8 PM. Exhibitions will remain up until April 1, 2018.

Coinciding with Art Basel in Miami Beach, The Betsy's exhibiting artists will include:

**PAOLA CASSOLA – exhibited in The Gallery @ The Betsy Hotel**

Paola Cassola was born in Milan. Her work moves freely between live performance, photography, sculpture, video, painting and writing. With attention to aesthetic quality, the work captures the challenges of life and confronts the fundamental questions of human beings in relation to nature and the cosmos. Cassola's work has been presented in publications including: Elle, L'Espresso, Gente, MarieClaire, Vogue, BeArt Magazine, AmericaOggi, Artribune, Giornale dell'Arte.

**EURYDICE – exhibited in The Conservatory @ The Betsy Hotel**

Eurydice is a multimedia artist & writer whose body of work is infused with a consistent ideological & aesthetic study of female marginalization & objectification, & the dualisms of mind vs. body, or repressed vs. uninhibited sexuality on daily life. Eurydice has a BA in Fine Arts & Creative Writing from Bard College, where she studied with Roy Lichtenstein & Robert Kelly; an MA in creative writing from the University of Colorado in Boulder, where she studied with Ed Dorn & Robert Steiner, & with Allen Ginsberg & William Burroughs at Naropa; an MA & an MFA from Brown University where she studied with Jack Hawkes & Robert Coover.

**RICK NEWTON – exhibited in The Lobby Salon @ The Betsy Hotel**

Rick Newton's work is stylistically inspired by scientific textbook illustrations. He presents his personal mythology concerning the future of our world. Incorporating Cold War imagery interacting with animal life set in surreal landscapes and supposes a world where there has been a shift in hierarchy. Rick Newton was born in West Palm Beach Florida and received a BFA in Boston from the Massachusetts College of Art.

**SARA MICHELLE RUPERT – exhibited in LT Steak and Seafood @ The Betsy Hotel**

Sarah Michelle Rupert works with photography, video, collage, drawing and animation, much of her work revolves around consumer, mass-communication and television culture in contemporary experience. She is currently the Gallery Director at Girls' Club Foundation, a private collection and exhibition space dedicated to contemporary art by women. She also works as an independent curator and consultant for arts organizations and independent projects developing website content, digital applications systems, curricula and workshops for artists. Rupert resides in South Florida.

**ROBERT ZUCKERMAN – exhibited in halls and on walls @ The Betsy Hotel, and in The Alley Pizzeria**

As a photographer in the motion picture industry, Robert Zuckerman's images have become the advertising and publicity campaigns for major movie franchises. Whether on or off the set, his connection is to emotional content, to the feeling present in the subject and in the moment. Zuckerman shoots anything where there is spirit and love in the room, from the inner city to the mansions of Malibu. His book Kindsight (Kindsight Press, LLC) is a collection of photographs and accompanying texts by Zuckerman illuminating the richness of everyday life encounters and experiences. He is a graduate of UC Berkeley and the American Film Institute.

**CHRISTOPHER CARTER – exhibited via video projection in The Conservatory @ The Betsy Hotel**

Born in Albuquerque, NM, and raised in Boston, MA, Christopher Carter infuses a blend of ethnic and urban influences into all of his work. His bold and decisively organic sculptures strongly reflect his African-American, Native American, and European heritage. His assemblages embody power and energy, accentuated by the source materials he selects for his creations. Carter is a graduate of the Maryland Institute, College of Art. *(A full exhibition of Carter's work is on display at Florida International University's Miami Beach Urban Studios, located at 420 Lincoln Road, Miami Beach, Fl. )*

**GERARD MOSSÉ – exhibited in The Light Box Gallery @ The Betsy Hotel**

Gerard Mossé has an MFA from Claremont Graduate School, maintains a studio in Tribeca, and has participated in wide ranging recent group exhibitions including Schema Projects, Chelsea Art Museum, Elga Wimmer Gallery, Danese Gallery, 156 Project Artspace, and Francene Sadlers Gallery (WA) Recent solo exhibitions include the Jill Newhouse Gallery in 2013 and 2016; a solo exhibition is expected at The Marlborough Gallery in 2018. Gerard Mossé lives in New York City.

**BROOKHART JONQUIL – exhibited in The Atrium @ The Betsy Hotel**

Brookhart Jonquil was born in Santa Cruz. Jonquil's sculptural works use architectural materials such as steel, mirrors, glass, cement, and fluorescent tubes. These constructions engage reflections and refractions of light to create delicately immaterial forms within physical structures, with a palpable use of gravity and tension. He is exhibited in partnership with Royal Enfield Motorcycles. He received his MFA from the School of the Art Institute of Chicago. Brookhart Jonquil resides in Miami, Florida.

**THE ART OF BOOKMAKING – exhibited in The Conservatory @ The Betsy Hotel)**

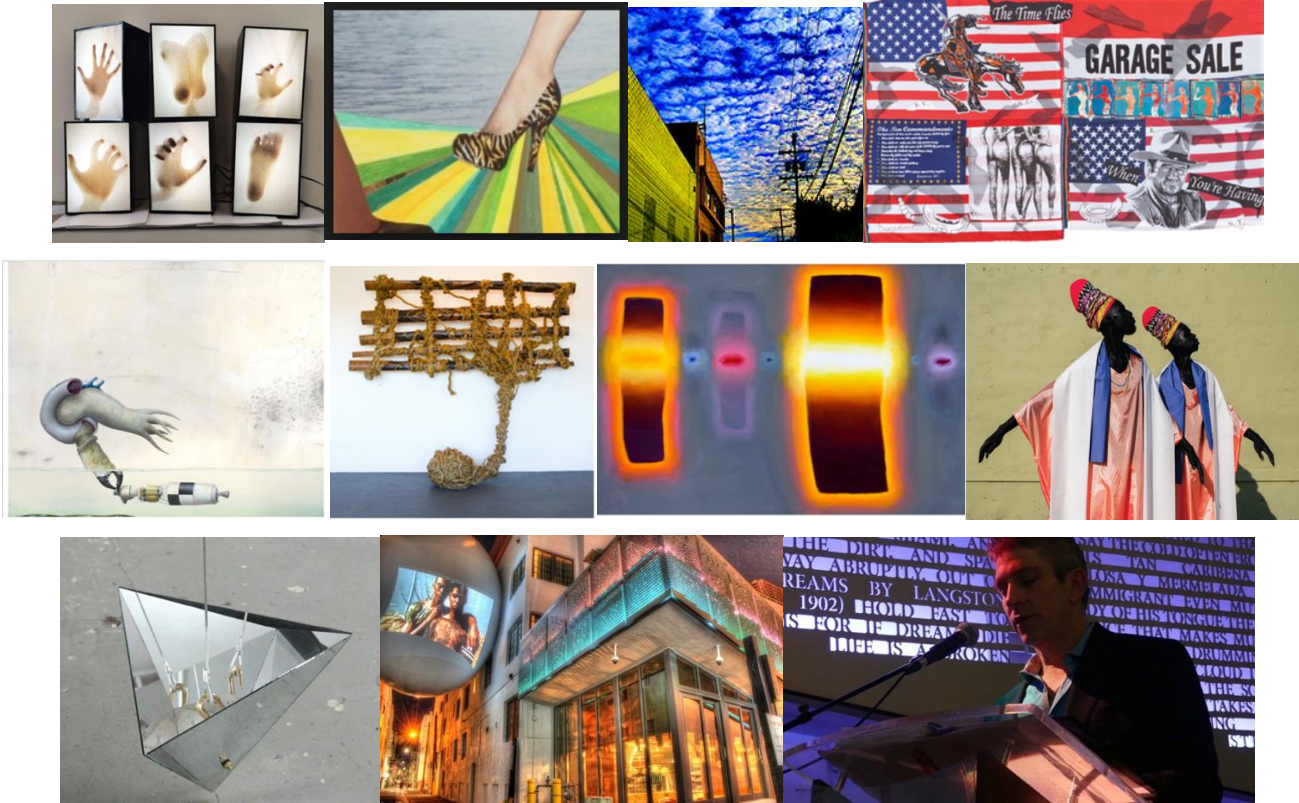
A collection of works by Miami-based artists Claire Jeanine Satin, Sarah Michelle Rupert, and Mary Larsen around 'bookmaking as art', and 'the art of bookmaking' in the 21<sup>st</sup> Century. Also relevant is discourse around participating artists living in two centuries.

## PRIZM ART FAIR – exhibited via projection on The Betsy Orb.

PRIZM expands the spectrum of exhibiting international artists from the African Diaspora and emerging markets and is interdisciplinary in scope, a Satellite Fair in its fifth year. The Betsy brings PRIZM to the Beach by projecting images curated by Mikhaile Solomon onto The Betsy Orb – between dusk and 11 PM each night during Art Basel Miami Beach, Dec 6 to 11, 2017.

## THE BETSY ORB AND THE BETSY POETRY RAIL – located at 14<sup>th</sup> Place, in the breezeway, adjacent to The Betsy Hotel

**The Betsy Orb** - Connecting the two historic properties with the use of a large orb, the bridge reflects the surrounding area yet is not visible from either Ocean Drive or Collins Avenue. Pedestrians must venture mid-way to Espanola Way at 14th Place and peek into the restored alleyway to experience the piece. **The Betsy Poetry Rail** - An installation of poetry – etched into metal by water jets – by 12 poets who have contributed to Miami literature. The Poetry Rail includes diverse, historic, and contemporary voices.



Images, L to R – Paola Cassola, Sara Michelle Rupert, Robert Zuckerman, Eurydice, Rick Newton, Christopher Carter, Gerard Mossé, Prizm Art Fair, Brookhart Jonquil, The Betsy Orb (pictured with projection) and The Betsy Poetry Rail (pictured with Miami Poet, Richard Blanco)

## About Art Basel

Founded in 1970 by gallerists from Basel, Art Basel today stages the world's premier art shows for Modern and contemporary art, sited in Basel, Miami Beach and Hong Kong. Defined by its host city and region, each show is unique, which is reflected in its participating galleries, artworks presented, and the content of parallel programming produced in collaboration with local institutions for each edition. Art Basel's engagement has expanded beyond art fairs through a number of new initiatives. In 2014, Art Basel launched its Crowdfunding Initiative, in collaboration with Kickstarter. This initiative presents jury-selected art projects to potential benefactors, which include Art Basel's vibrant audience and the Kickstarter community. The initiative has catalyzed support for outstanding non-commercial art projects worldwide and so far has helped pledge over \$2 million to creative projects around the world. For Art Basel Cities, launched in 2016, Art Basel is working with selected partner cities to develop vibrant and content-driven programs specific to the individual city. Connecting them to the global art world through Art Basel's expertise and network, Art Basel Cities supports its partners to develop their unique cultural landscape. **For further information, please visit [artbasel.com](http://artbasel.com)**

**ABOUT THE BETSY HOTEL** - The Betsy-South Beach ([www.thebetsyhotel.com](http://www.thebetsyhotel.com)) is well regarded for its promotion of culture and art through a unique philanthropy, arts, culture and education program (PACE), which is the driving force behind the four-star luxury hotel's mission. The recently expanded 130 room boutique resort hotel debuted two new public art pieces in 2017: The Betsy Orb and Poetry Rail. Recent awards for luxury hotel excellence include: Travel and Leisure's Top Boutique Hotel on Miami Beach (2017), and Conde Nast Gold List (2017), among many others. A 2017 recipient of the Americans for the Arts BCA 10 Award for exemplary arts programming, The Betsy – South Beach is on a mission to redefine hospitality with music, art exhibitions, readings, book signings, guest room libraries, poems placed on pillows at turn down each night, and charitable collaboration (since 2009) with hundreds of charitable organizations in South Beach, and beyond. The Betsy-South Beach is family owned and operated. **The Betsy-South Beach – 1440 Ocean Drive, Miami Beach, 33139 – 305-760-6900 – press inquiries – [Betsy@jpublicrelations.com](mailto:Betsy@jpublicrelations.com)**